

There is a Japanese proverb about climbing Mt. Fuji:

“He who climbs Mt. Fuji is a wise man; he who climbs twice is
a fool.”

Intro & Recap

My advice to you...

Just don't



At a very large US Bank

“Kiwi method”

Go see... everything



Fear



“Shhhh!”



Users

Tech



Years of tech debt
and local
optimizations.

Approach



Training



Warm up..

“On your marks”

Team Selection



“Get Set”

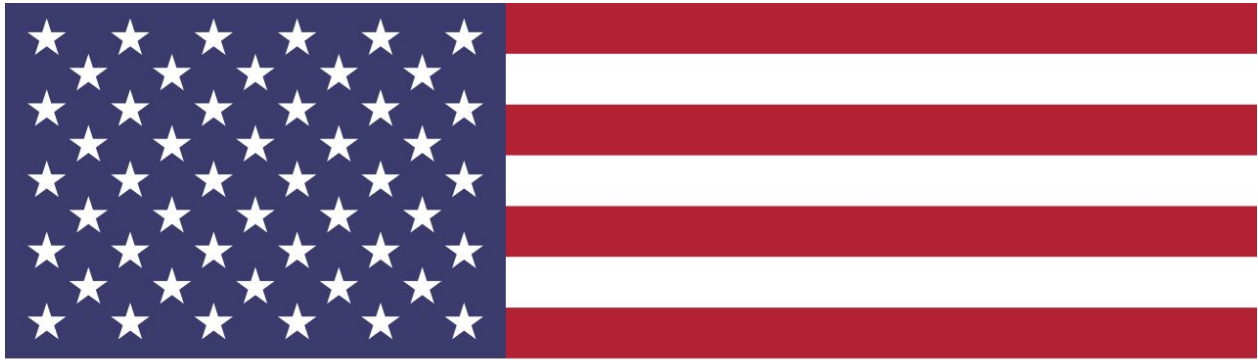
“Go!”

So what happened then?

There is a Japanese proverb about climbing Mt. Fuji:

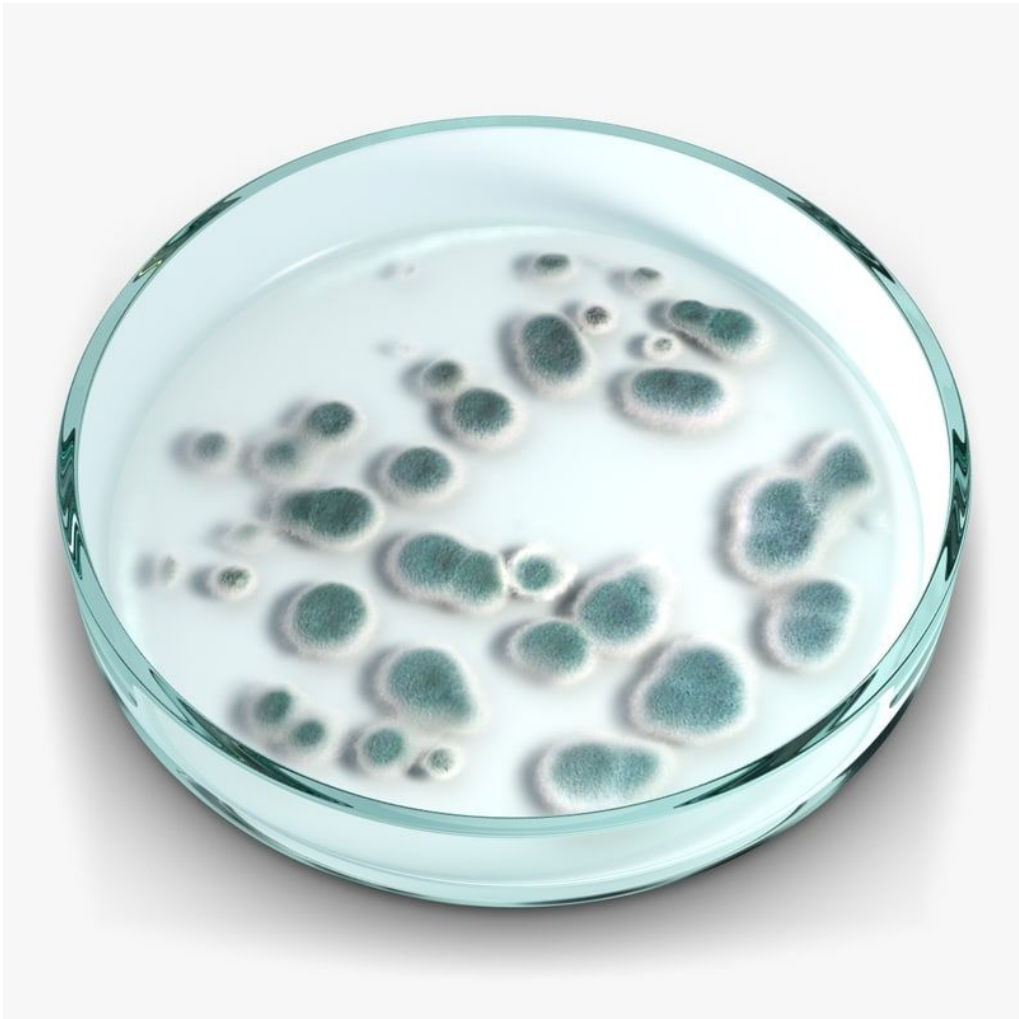
“He who climbs Mt. Fuji is a wise man; he who climbs twice is a fool.”

How about three times?



First thing first...



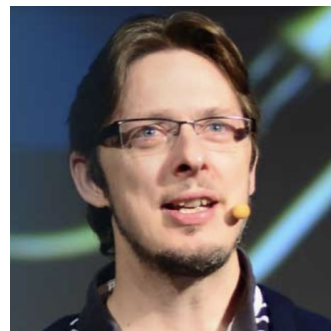




ahmadfahmy.com



neuri.com



Speed dating

Get the stakeholders on board first...

Systems

The missing context

Change...

“At first I was convinced it could not work here...”

gordon.j.weir@gmail.com